

## LC Terminator

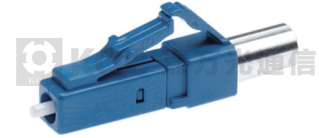
Optic terminators use doped fiber designs to eliminate unwanted back-reflection. These optical terminators can be used to terminate dark fiber ports in fiber optic systems and networks. Optical terminator plugs also provide improved personnel safety over other termination methods. And the terminators can be chosed UPC or APC polishes.

### Features

- Dope Fiber Technology
- Wide Operating Wavelength
- Low Back Reflection
- High Durability over High Power
- UPC or APC polishes are available

### Applications

- CATV & WAN
- Data Network
- Passive Optical Network
- Telecommunication networks



Item	Terminator
Return Loss	$\geq 55\text{dB}$ (UPC) / $\geq 65\text{dB}$ (APC)
Operating Temperature	-40 to +75°C
Operating Wavelength	1250-1650
Maximum Power	500mw