

Specification

SC-ST Duplex Adapter

Description

Fiber optic adapter is to achieve the same or different optical fiber connectors docking in optical links, make the light path connected under the small loss. It is to put the fiber of two surface precision docking, so that the optical output of light energy to the maximum coupling in the receiving optical fiber, and since it entered the optical link to minimize the effects on the system. Widely used in optical fiber distribution frame (ODF), fiber optic communications equipment, instruments, etc., superior performance, stable and reliable.

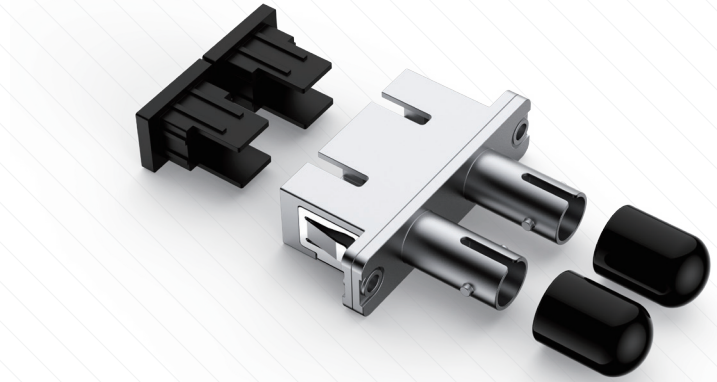
Features

- Low insertion loss and back reflection loss
- High precision alignment
- Compact design
- Metal body
- Telcordia, ANSI, TIA/EIA, NTT and JIS compliance

Application

- Telecommunication networks
- Local Area Networks (LANs)
- Data processing networks
- Test equipment
- Industrial, military and medical
- Metro

Specification



Item	Specification
Insertion Loss	Typical $\leq 0.3\text{dB}$, Maximum $\leq 0.5\text{dB}$
Durability	$< 0.20\text{dB}$ typical change, 1000 matings
Operating Temperature	$-40 \sim 85^{\circ}\text{C}$