

# Specification

## MPO Adapter

### Description

MPO fiber optic adapter make use of the pin hole, which come with diameter of 0.7mm and are located on the end surface of connector ferrules. To ensure precision mating between fiber optical connectors. Due to this, every MPO fiber optical cable adapter is compatible with both single and multi-mode fiber connectors. Our range of MPO fiber optic adapters are widely used on base stations of communication system, ODF in computer rooms, communication devices and kinds of test instruments.

### Application

- CATV
- Telecommunication networks
- Local Area Networks (LANs)
- Data processing networks
- Test equipment
- Premise installations
- Industrial, military and medical
- Metro
- Video

### Features

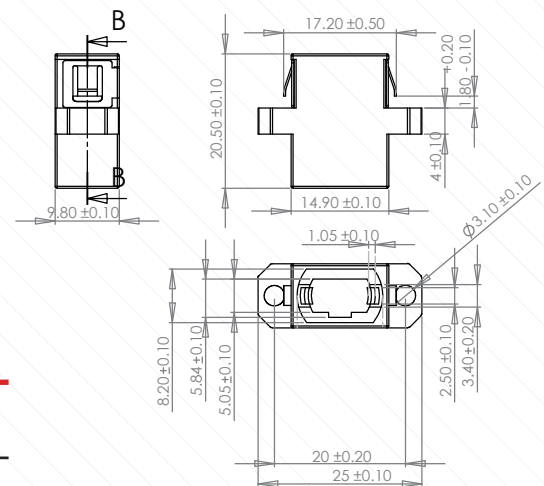
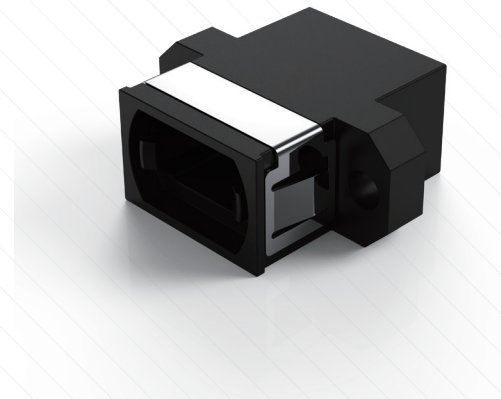
- Low insertion loss and back reflection loss
- High precision alignment
- Compact design

### Specification

Item	Specification
Insertion Loss	<0.20dB
Durability	<0.20dB typical change, 1000 matings
Operating Temperature	-40 ~ 85°C

### Availability

Flange Type	Key Orientation	Dust Cap Colors
With Flange	Opposed	Black/Magenta/Grey
Without Flange	Aligned	



Note: Such as demand and conventional standard is different, can produce products according to customer's requirements.